

UCLA

Samueli
School of Engineering



CEED VISION

WINTER NEWSLETTER 2025



TABLE OF CONTENTS

THANK YOU TO OUR DONORS 3

BUZZWORTHY NEWS 4

WILDFIRES SUPPORT & RESOURCES 6

DEAN'S LIST 7

2025 CORPORATE ROUND TABLE 8

PRECOLLEGE EVENTS 9

BLACK HISTORY MONTH 11

RESOURCES 12

CLOSING PAGE 13

THANK YOU

To our Donors and Sponsors,

Thank you for your donation in support of the UCLA CEED Program. Your donation allows us to continue providing high-touch services that support the recruitment, retention, and graduation of CEED students.

These services include academic support, professional development, personalized guidance, and a strong community that empowers CEED students to thrive. Your commitment makes a lasting difference in the lives of those we serve, and we are deeply grateful for your partnership.

Thank you and Go Bruins!

The CEED Team

***Due to changes regarding Donor Privacy Policy, our office is unable to send personalized “Thank you” messages.

BUZZWORTHY NEWS

CEED STUDENTS

JULIEN CLAIRIS-GAUTHIER

BIOENGINEERING

Julien Clairis-Gauthier, a CEED and NSBE member, was featured in Samueli's Newsletter (December 2024)

for his contributions as a UCLA Engineering Ambassador and his desire to merge bioengineering with business for accessible medical solutions. Julian also discusses the impact that CEED's freshman research project, where he developed 3D printed pill capsules, had on his academic and professional journey.

"I do this because I love UCLA Engineering so much — I couldn't imagine keeping it to myself," said Julien Clairis-Gauthier of his experience working as a UCLA Engineering Ambassador. "Being an ambassador gives me the chance to help students see themselves in STEM, just like someone once helped me."

To read full article please visit http://tiny.cc/Julien_Clairis_Gauthier_s

VICTORIA MADU

CHEMICAL ENGINEERING

Victoria Madu, a CEED and NSBE member, was featured in Samueli's Newsletter (February 2025)

for advancing personal care product innovation through a fusion of scientific rigor and an empathetic approach.

"My hope is whatever career path I take after graduating, I am able to innovate in ways that affect regular people like myself..."

To read full article please visit bit.ly/victoria_madu_samueli_ucla_edu_41Gk2Wz



CEED ALUMNI

ITOHAN ERO '23

COMPUTER SCIENCE

UCLA alumna Itohan Ero, was featured in Samueli's Newsletter (February 2025) for her contributions in whose STEM journey began with Girls Who Code and early experiences at CSULB, is now a Google software engineer developing YouTube Shorts tools. At UCLA, she thrived with support from CEED and Women in Engineering while leading NSBE to empower underrepresented tech talent.

"Don't count yourself out before you even give yourself a chance. You never know what you're capable of until you try..."

To read full article please visit bit.ly/Itohan_Ero_samueli_ucla_edu_41pCX6l



CAPTAIN VICTOR GARZA '99

MECHANICAL ENGINEERING

On February 25, CEED alumnus, Captain Victor Garza, delivered an info session titled,

"Opportunities and Benefits of the Nuclear Navy" through the UCLA Engineering Internship and Research Program. During the session, he discussed financial support options through the Nuclear Propulsion Officer Candidate Program and explored career paths in nuclear propulsion.

To read more about Captain Garza please visit: <https://www.surfpac.navy.mil/Leaders/Biography/Article/3504199/capt-victor-j-garza/>



BUZZWORTHY NEWS

RICHARD GRUNDY '99

ELECTRICAL ENGINEERING BS/MS

On January 22, Richard Grundy, founder of PassNinja and CEED alumnus, led an info session where he discussed opportunities at his company and provided career advice to CEED, AISES, SOLES, and NSBE students. During his time at UCLA, Grundy was also highly involved with SOLES, where he served as president in 1997.



To read more about PassNinja please visit: <https://www.passninja.com/>

STRUCTURED STUDY NIGHT



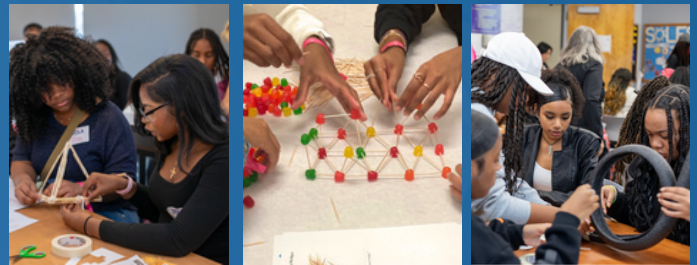
This quarter, CEED's Structured Study Night (SSN) offered tutoring for 43 STEM courses, supporting approximately 85 students. SSN is hosted on a weekly basis via Zoom. Additionally, two in-person sessions were held on February 10 and March 10 with dinner included.

The event provided a great opportunity for students to focus on their studies in a supportive, collaborative environment with their fellow CEED students.

LADYLIKE DAY AT UCLA



Hosted on December 14, 2024, LadyLike Day brought 150 Black and Latina girls to the UCLA campus for a series of courses that “educate, empower, and inspire”. In partnership with WE@UCLA and CEED, the event featured STEM workshops for girls ages 12-17.



The STEM workshops included the Gumdrop Bridge, Popsicle Stick Catapult, Marble Roller Coaster, and DOTS Bridges, engaging girls in interactive engineering challenges.

Photos retrieved from Ladylike Gallery

NSBE STUDENTS CREATE CYCLOTRON



NSBE-led UCLA engineering students are collaboratively building a cyclotron using a 3D printer and electromagnetic fields to accelerate metal balls, gaining hands-on, interdisciplinary experience.

To read full article please visit: bit.ly/NSBEStudentscreatecyclotron

LA WILDFIRES UCLA CAMPUS-WIDE RESOURCES

In January, wildfires across Los Angeles disrupted the lives of many students and alumni in the CEED community. Whether you were displaced, Physically or emotionally impacted, or are still in recovery, we want you to know: **You're not alone.**

We are continuing to identify CEED students and alumni affected by the fires. If you or someone you know was impacted, please reach out -your well-being matters to us.

UCLA STUDENT RESOURCES

UCLA Wildfire Resource Guide

Info on disaster aid, trauma support, and recovery resources

www.ucla.app.box.com/wildfire-guide ↗

Basic Needs Support

Emergency food, housing, and supplies

♿ www.basicneeds.ucla.edu

Economic Crisis Response Team (ECRT)

Emergency housing, food vouchers, and financial help

✉ email: ecr@saonet.ucla.edu

♿ www.studentincrisis.ucla.edu/economic-crisis-response

Student in Crisis / Case Management

Appointments available virtually or in person

♿ www.studentincrisis.ucla.edu

Student Legal Services: Assistance with insurance, legal docs, housing issues

♿ www.studentlegal.ucla.edu

📍 Appointments: intake.studentlegal.ucla.edu/form/

Academic Support

♿ www.deanofstudents.ucla.edu/

♿ www.cae.ucla.edu/

ADDITIONAL SUPPORT

Dream Resource Center

Support for immigrant & undocumented students: legal aid, wellness, and emergency resources

♿ www.labor.ucla.edu/our-projects/dream-resource-center

bit.ly/3R836IH ↗

Academic Case Management for Graduate Students

Help with academic challenges and referrals to campus support

♿ www.grad.ucla.edu/academic-case-management

Mutual Aid LA Resource Map

Community-based help near you

bit.ly/mutualaidla-map ↗

UCLA Volunteer Center

Support fellow Bruins

♿ www.volunteer.ucla.edu

Bruin Relief Initiative

Get or give wildfire-related help

♿ www.volunteer.ucla.edu/bruin-relief-initiative-volunteer-events-2



CHECK YOUR UCLA EMAIL FOR MORE UPDATES. STAY SAFE. CEED IS HERE FOR YOU ♥

DEANS LIST

CEED would like to recognize the academic Excellence among the CEED students. Students who are eligible to be on the Dean's List must earn a GPA of 3.862 while taking 15 units or more.

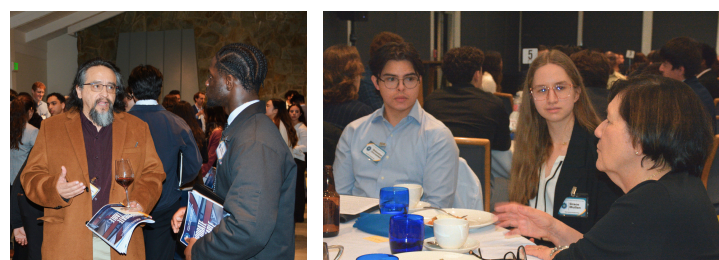
NYALA BINGENER
WYATT BROWN
RIKA CANLAS
PAUL CANO
DAVIDE CIUFFOLI
MARK DIAZ
DAVID FARAG
KARIN FOUAD FAHIM
JONATHAN GARCIA
NAOMI GARZA
MARIA GUERRA
TAYA HOLMES
JENNA LACUATA
VICTOR LOPEZ
DANIEL MERINO
OLIVIA NGO
MIGUEL PARTIDA
MAHAN POURFAKHR
ANDREAS PSYCHOYOS
ANTONIO RAMIREZ
NOLAN RICE
PETUNIA RIZO
MARCO RODRIGUEZ
LEENA SANCHEZ
KAITLYN SRINIVASAN
ANGEL VILLA

2025 CEED CORPORATE ROUND TABLE

SPONSORING COMPANIES

AEROSPACE CORPORATION •
BOEING COMPANY • BCCI
CONSTRUCTION • FINCONS
GROUP • GOOGLE • LOCKHEED
MARTIN • METROLINK • MOOG
INC. • NORTHROP GRUMMAN •
PEPSICO • P2S LP • SIMPSON
GUMPERTZ & HEGER • SPACEX

On February 15, 2025, about 100 students and company representatives participated in the annual CEED Corporate Round Table (CRT), offering students the opportunity to expand their professional networks, articulate their career goals, and uncover job prospects. Held at the UCLA Faculty Club, the event included a reception, connections with industry representatives, feedback on elevator pitches, and a raffle. We would like to thank BCCI and Pepsico for the raffle items.



MESA UPDATES



MESA Day Preliminary Competitions took place on Saturday, March 1, for high school students and Saturday, March 8, for middle school students.

About 250 high school students and 200 middle school students participated in various STEM challenges, applying their knowledge and problem-solving skills.



COMPETITION HIGHLIGHTS

Students participated in a variety of challenges, including: Cargo Glider · Coding Solutions · Bridges · Bio Breakthrough · Investigative Science · Math Escape · MESA Machine · Moon Base · NEDC · Think Tank



MESA Day gives students the opportunity to apply STEM concepts, develop problem-solving skills, and work in teams.

These competitions help prepare students for future academic and career opportunities. Sixty-six middle school and high school students advanced to the regional competition at Cal State LA.

TRI-ORG UPDATES



At the AISES National Conference, the organization received the Youth Engagement Award for its efforts in fostering youth participation in STEM.

Jaeden Wesley was elected as the AISES Jr. U.S. National Student Representative, a role focused on student advocacy and regional engagement. The conference also provided opportunities for first-time attendees to connect with AISES leadership and resources, strengthening the organization's impact within Indigenous communities.



NSBE held an FRC Prep Session to help members polish resumes, LinkedIn profiles, and interview skills. They launched the UCLA Spark Campaign to raise funds for 25 members to attend the 50th National Conference in Chicago.



Members led STEM workshops at Virgil Middle School for outreach. They are preparing for WiSE Day on May 5, 2025, which will bring 200+ students to UCLA for STEM activities. NSBE also organized a beach day, game night, study nights, and an NSBE x ASP Interview Workshop to build community.



During the winter quarter, SOLES expanded outreach, impacting 400+ high school students through EIT programs, campus tours, and Noche de Ciencias.

They launched Equipando Padres to involve parents in college prep, won a Silver Chapter Award, and gained SHPE recognition for InterSHPE Relations. They hosted SHPE'sGiving and are planning a Copa del Sol soccer tournament. Their latest Noche de Ciencias engaged 160+ students, reinforcing strong interest and retention.



BLACK HISTORY MONTH

In honor of Black History Month, UCLA CEED highlighted Black role models who have made an impact in STEM and Social Justice

THIS FEBRUARY, THE BELOW NOTABLE FIGURES WERE FEATURED:

ALICE AGUSTA BALL

DR. PATRICIA BATH

MARION WILLIAMSON BLALOCK

BLAKE BOLDEN

DR. MARIE M. DALY

FANI LOU HAMER

DR. DOROTHY JEAN TILLMAN II

KAREEM ABDUL JABAAR

THOMAS JENNINGS

RAFER JOHNSON

GEN. MICHAEL ELLIOTT LANGLEY

DR. ROBERT H. LAWRENCE

WILLIE O'REE

JOHN C. ROBINSON

LANNY SMOOT

VIVIEN THOMAS

HARVEY ROBERT TURNER

MARY HARDWAY WALKER

DR. DIANE WATSON

IDA B. WELLS



CEED Celebrates
2025 BLACK HISTORY MONTH
Marion Williamson Blalock
DEI Leader in Engineering Education

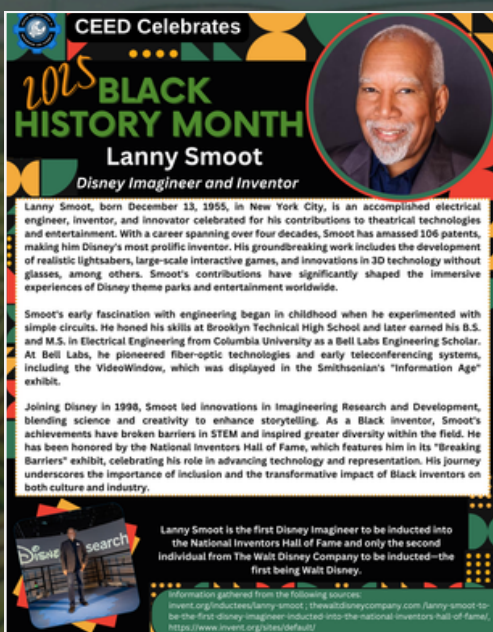
Marion Williamson Blalock (1943 - 2023), a pioneer of diversity within the field of engineering, was the Assistant Dean of Students at Purdue, and later served as the Director of Purdue's Minority Engineering Program (MEP), leading the department for 34 years.

Blalock, one of 20 Black women pursuing a degree at Purdue University in the late 1960s, earned her BS in Sociology and MS in Counseling and Personal Services from the university. As an undergraduate student, Blalock was part of the student movement toward greater diversity and inclusion at Purdue and was a founding member of the Zeta Theta Chapter of the Delta Sigma Theta Sorority at Purdue University. After graduating, she was the first female hired to work full-time in the Office of the Dean of Men at Purdue University. She worked with the first head of Purdue's Industrial Engineering School, Harold T. Amrine, and with an African American Engineering professor, Arthur J. Bond, to launch Purdue's effort to recruit more minority engineering students. She also supported Dr. Bond in advising a small group of African American engineering students to begin the organization that later became the National Society of Black Engineers (NSBE) and was a member of the NSBE National Advisory Board for many years.

Blalock encouraged and pushed thousands of collegiate and pre-collegiate students to overcome structural barriers within engineering careers. With her dedication to foster the growth of these students, 90% of current underrepresented students move on past their first year. Under her leadership, the MEP program graduated over 2,300 underrepresented minority students in engineering, who progressed on to long careers in engineering, business, and education. Her model of the MEP program is used in several universities across the United States to accomplish the same goal—to recruit and retain underrepresented students in Engineering. Blalock passed in 2023 after 15 years of retirement, but her legacy in Diversity, Equity, and Inclusion lives on.

Blalock began funding outreach and scholarship programs for underrepresented communities with grants from nonprofit and governmental organizations. She also reached out to corporate partners for funding such as Eastman Kodak. Blalock (right) is shown holding the phone in the early days of her outreach programs.

Information gathered from the following sources:
<https://stories.purdue.edu/pearl-at-purdue-marion-blalock-offered-mentorship-motivation-that-helped-minority-engineering-students-succeed/>; <https://engineering.purdue.edu/MEP/who-we-are/mentors/2021/marion-williamson>



CEED Celebrates
2025 BLACK HISTORY MONTH
Lanny Smoot
Disney Imagineer and Inventor

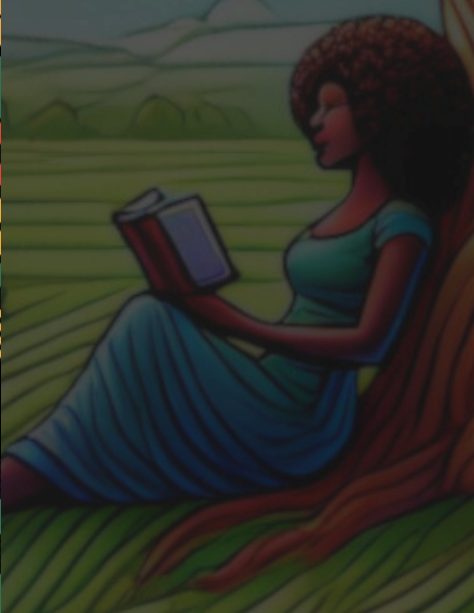
Lanny Smoot, born December 13, 1955, in New York City, is an accomplished electrical engineer, inventor, and innovator celebrated for his contributions to theatrical technologies and entertainment. With a career spanning over four decades, Smoot has amassed 106 patents, making him Disney's most prolific inventor. His groundbreaking work includes the development of realistic lightsabers, large-scale interactive games, and innovations in 3D technology without glasses, among others. Smoot's contributions have significantly shaped the immersive experiences of Disney theme parks and entertainment worldwide.

Smoot's early fascination with engineering began in childhood when he experimented with simple circuits. He honed his skills at Brooklyn Technical High School and later earned his B.S. and M.S. in Electrical Engineering from Columbia University as a Bell Labs Engineering Scholar. At Bell Labs, he pioneered fiber-optic technologies and early teleconferencing systems, including the VideoWindow, which was displayed in the Smithsonian's "Information Age" exhibit.

Joining Disney in 1998, Smoot led innovations in Imagineering Research and Development, blending science and creativity to enhance storytelling. As a Black inventor, Smoot's achievements have broken barriers in STEM and inspired greater diversity within the field. He has been honored by the National Inventors Hall of Fame, which features him in its "Breaking Barriers" exhibit, celebrating his role in advancing technology and representation. His journey underscores the importance of inclusion and the transformative impact of Black inventors on both culture and industry.

Lanny Smoot is the first Disney Imagineer to be inducted into the National Inventors Hall of Fame and only the second individual from The Walt Disney Company to be inducted—the first being Walt Disney.

Information gathered from the following sources:
<https://www.invent.org/products/lanny-smoot-the-walt-disney-company>; <https://www.invent.org/products/lanny-smoot-the-walt-disney-company>; <https://www.invent.org/products/lanny-smoot-the-walt-disney-company>; <https://www.invent.org/products/lanny-smoot-the-walt-disney-company>



See all Black History Month 2025 highlights at www.ceed.ucla.edu/bhm-2025

Thanks to the writers for sharing insights on these icons who shaped Black history

THANK YOU TO OUR INDUSTRY PARTNERS

INDUSTRY ADVISORY BOARD



METROLINK.



Qualcomm



INDUSTRY PARTNERS



STRATEGIC PARTNERS



SINCE 1983, CEED'S INDUSTRY AFFILIATES HAVE:

- Contributed to CEED efforts and student scholarships
- Committed the time and resource of representatives
- Hired undergraduate student interns
- Hired CEED graduates for full time employment



*Thank you to the CEED Staff and Student Staff
who contributed to the creation of the
Winter 2025 CEED Newsletter*

Visual Design: Jeanie V. Menjivar

420 Westwood Plaza
Los Angeles, CA 90095

Phone: (310) 206-6493
Fax: (310) 825-3908

Email: ceed@seas.ucla.edu
Website: ceed.ucla.edu

UCLA **Samueli**
School of Engineering